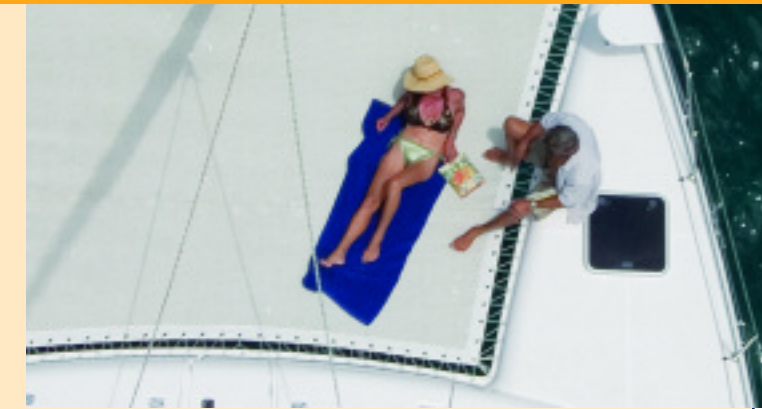




LE PARD 46
The Most Natural Choice Of Cats



■ The Leopard range of blue-water cruising catamarans has added to the pride with the introduction of the innovative Leopard 46.

■ Performance, spacious accommodations and a focus on outdoor living are the leading features of this new model, built by Robertson and Caine and designed by Morrelli and Melvin, architects of high performance cats.

■ Built using the latest technology and materials, the Leopard 46 integrates an open-plan layout with exceptional interior volume, offering a comfortable cruising cat that combines excellent load carrying capacity with superior performance levels.



EXTERIOR



SALOON & GALLEY



ACCOMMODATIONS

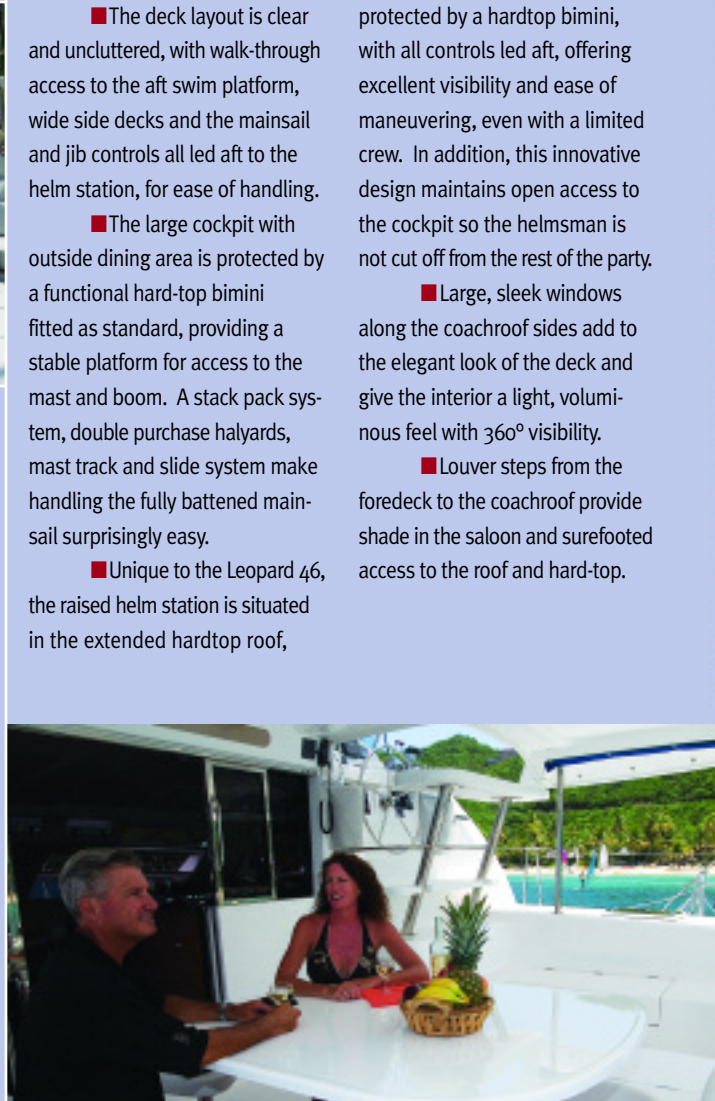


UNIQUE FEATURES

■ The Leopard 46 offers exceptional performance and speed on the water thanks to a powerful rig, stepped hull design and light displacement.

■ Inspired by the flagship Leopard 62, a raised helm station is located in the hard top roof with open access to the cockpit and all controls lead aft for excellent visibility and resulting in a cat that is extremely easy to sail, even with a limited crew.

■ The Leopard 46's overall performance and ease of handling has earned it 'Boat of the Year' nominations from Cruising World magazine and acclaim in the international sailing press.



■ The deck layout is clear and uncluttered, with walk-through access to the aft swim platform, wide side decks and the mainsail and jib controls all led aft to the helm station, for ease of handling.

■ The large cockpit with outside dining area is protected by a functional hard-top bimini fitted as standard, providing a stable platform for access to the mast and boom. A stack pack system, double purchase halyards, mast track and slide system make handling the fully battened mainsail surprisingly easy.

■ Unique to the Leopard 46, the raised helm station is situated in the extended hardtop roof,

protected by a hardtop bimini, with all controls led aft, offering excellent visibility and ease of maneuvering, even with a limited crew. In addition, this innovative design maintains open access to the cockpit so the helmsman is not cut off from the rest of the party.

■ Large, sleek windows along the coachroof sides add to the elegant look of the deck and give the interior a light, voluminous feel with 360° visibility.

■ Louver steps from the foredeck to the coachroof provide shade in the saloon and surefooted access to the roof and hard-top.





■ The Leopard 46's galley-up design incorporates a spacious saloon area in a cherry wood finish, with a wide U-shaped settee and an aft-facing galley with plenty of room to circulate. A softly curved Corian cocktail bar overlooks the adjoining cockpit area, enabling drinks and hors d'oeuvres to be served directly in the cockpit.

■ For dining, you'll appreciate the ergonomic galley layout featuring soft curves and heat-resistant Corian countertops. Fully equipped, the compact galley features a standard stainless steel stove with oven and broiler and a double sink with mixer tap and ample counter and cabinet space. Two overhead hatches and three opening ports forward provide excellent ventilation.

■ Catering for a larger party is no problem, with standard appliances including a large refrigerator-freezer system to port, with well-insulated compartments and stylish, front-opening stainless steel doors.



■ The navigation station with large chart table and optional remote auto pilot, is positioned to starboard. The upgraded instrumentation panel houses optional navigation instruments, CD/radio stereo system and VHF.

■ The companionway to the owner's suite is to starboard and can be closed off with a sliding door system for extra privacy when desired (3-cabin layout).



■ Soft overhead lighting, quality upholstery and light cherry wood finishes give a bright and airy feel to the Leopard 46 interior. High quality standard Corian surfaces and harmonious faux leather fabrics are used throughout. Several interior color options are available.

■ Large windows provide panoramic views and allow natural light to flood in. Opening hatches add to the comfort of this important living area.





■ The Leopard 46 is available in 3- or 4-cabin owner layouts. In the 3-cabin layout, there are two guest cabins with en suite heads in the port hull, while the starboard hull is entirely dedicated to the owner, with a large master cabin, lounge area and private bathroom forward, with attractive cherry finishing throughout.

■ Each guest cabin has been thought out with practicality and comfort as a premium. Well ventilated with opening hatch and ports, there is plenty of storage and excellent lighting, with adjustable reading lights and full size hanging lockers with shelving. The forward guest cabin also features a storage area in the forepeak or an optional berth. Two spacious heads with separate shower stalls serve the two guest cabins and each feature a Corian washbasin with mixer tap, large separate shower stall, mirrored vanity unit and oversized marine toilet.

■ The very spacious owner's shower room and head are located forward in the starboard hull. Amenities include a Corian washbasin with mixer tap, large separate shower stall with adjustable shower head, mirrored vanity unit and oversized marine toilet.

■ Located aft, the master stateroom features a large double berth, book shelf, discrete reading lights, a tall hanging locker and plentiful shelving for clothing and personal items, all in a luxurious cherry finish. Two opening hatches and two opening ports provide excellent ventilation and luminosity.

■ The 3 cabin layout incorporates a separate study/lounge area with an ultra modern faux leather settee, desk, reading light, overhead cabinet and dedicated hanging locker with shelf.



Owners Study



Guest Cabin



Master Cabin

unique features

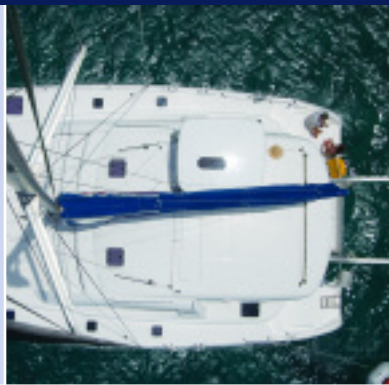


■ The revolutionary helm station allows all the maneuvers to be handled from the helm seat, with all the mainsail and jib sheets brought aft to primary winches for easy single handling. An optional electric winch can make handling this cat even easier.

■ The mainsheet traveler is positioned overhead on the hard-top bimini, allowing safe, walk-through access from the cockpit to the aft platform which is great for swimming, diving or boarding a dinghy. The ventilated hard-top also shades the cockpit and provides excellent access to the boom. An optional removable windscreen and side/aft curtains can enclose the entire area.

■ The innovative stepped hull design increases volume while minimizing the wetted hull surface, giving exceptional load carrying capacity and ensuring maximal performance.

■ The entire aft section of the cockpit can be configured as a separate socializing area, with the rear backrests adjusting to face forward or aft. Cleverly, the optional aft bench seat also converts to serve as a landing platform for the dinghy or the ideal spot from which to enjoy a day's snorkeling, diving, or watersports.



LEOPARD 46 STANDARD SPECIFICATIONS

Length overall	46 ft 4 in	14.13 M
Waterline length	44 ft 7 in	13.60 M
Beam	24 ft 10 in	7.57 M
Draft	4 ft 5 in	1.35 M
Displacement	24,206 lbs	10,980 Kg
Mast height	69 ft 9 in	21.30 M
Fuel capacity	185 US gal	700 L
Water capacity	206 US gal	780 L
Engines	40HP x 2	
Sail area	1,442 ² ft	134 ² M

■ The Leopard 46 contains all the top features sailors desire, including blue water capability, great performance, solid construction, a superb anchoring system, excellent ventilation, high quality equipment, large tank capacities standard, a standard hard top, and offers excellent value for money.

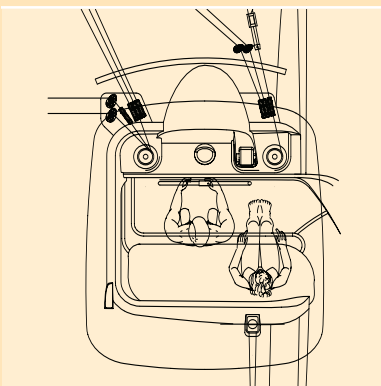
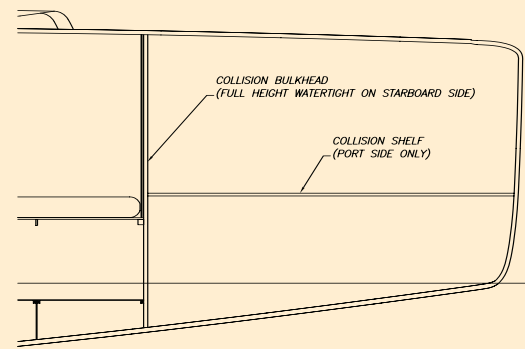
■ The standard equipment can be enhanced by a range of quality optional items including generator, air conditioning, water maker and much more, call for details.

■ Robertson and Caine use the most advanced composite GRP sandwich construction incorporating a vacuum bonded balsa core, providing high compression and impact resistance. E glass stitched fabric ensures maximum strength, a no crimp factor and ensures a very good resin to glass ratio.

■ The hull joints are solid fiberglass. The hull deck joint is bonded and through bolted, with additional glass at strategic stress points to ensure maximum strength. Bulkheads are bonded to the hull.

■ Isophthalic gelcoat and resin rich tissue helps prevent osmosis. The hull laminate is light and durable resulting in a dynamic weight carrying capacity and excellent motion reaction of the hull, yet is also strong for ease of mind.

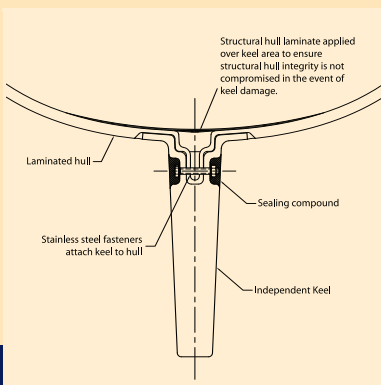
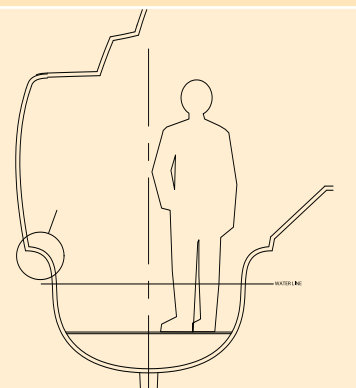
The collision bulkheads prevent water intrusion in case of damage to the bows.



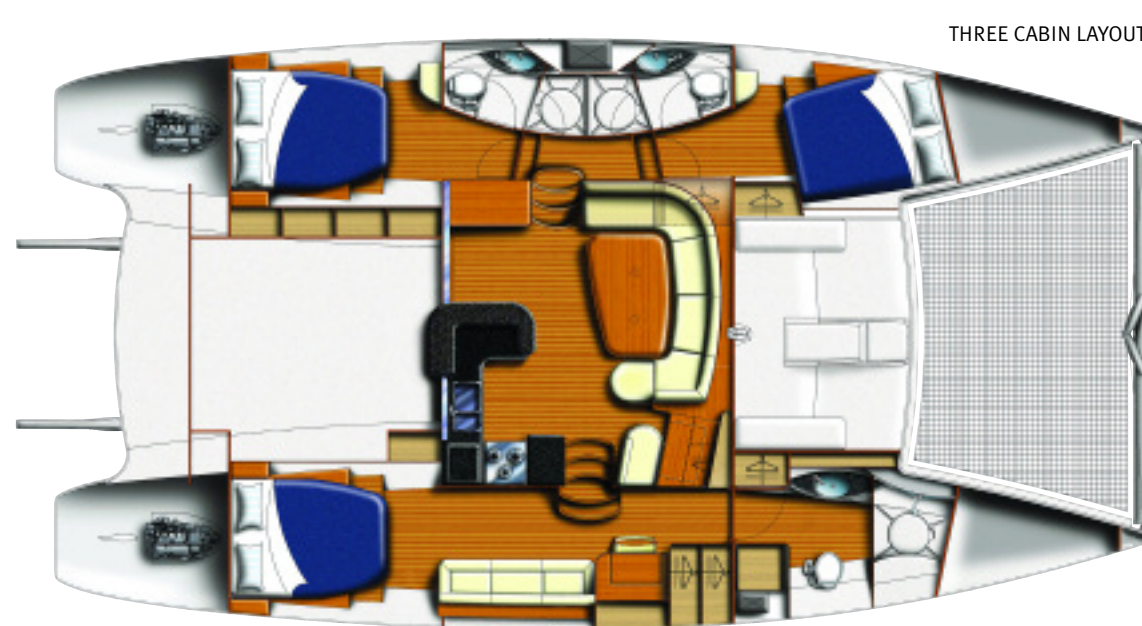
Helm Station:

- Centralized sail control next to helm position allows for single handed operation, with the genoa and mainsail sheets and the mainsail traveler lines all led aft to the helm.
- Huge rope storage compartment keeps deck clear of rope clutter.
- Raised helm position allows panoramic view which is enhanced by a fixed port in the hardtop bimini.
- Helm station can accommodate up to four.

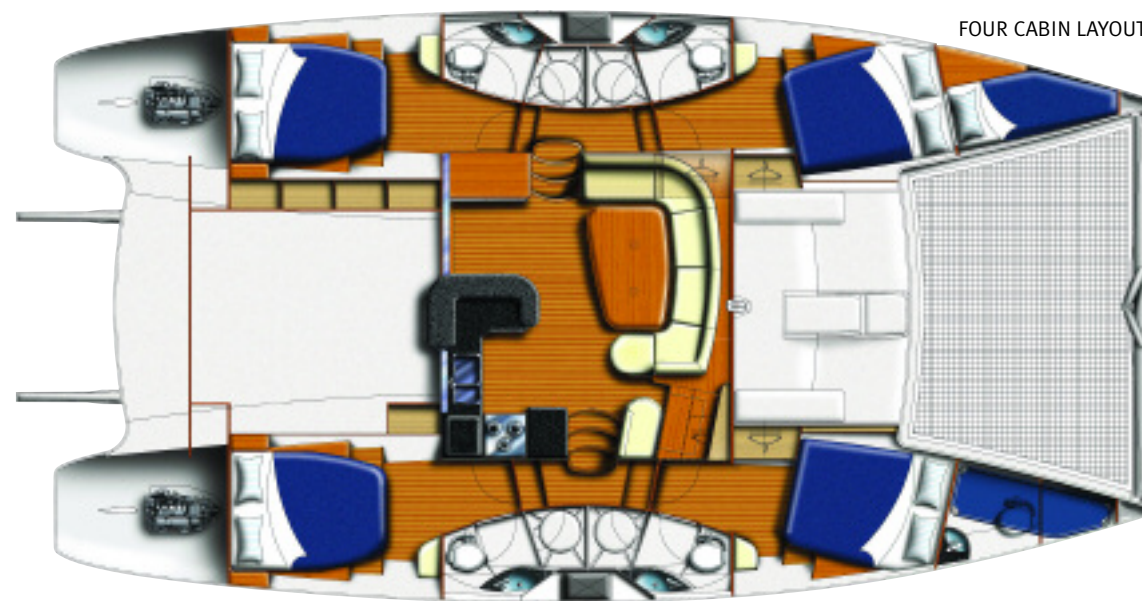
Hull Chine: Increases interior volume without compromising hull shape and minimizes wetted surface for more speed. Water is deflected away from the hull thus keeping deck drier, while the radiused chine intersection reduces slapping.



The keels are designed as replacement units to ensure structural hull integrity is not compromised in the event of keel damage



THREE CABIN LAYOUT



FOUR CABIN LAYOUT

